

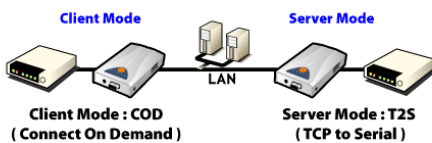
Secure Serial Ethernet Converter **EZL-200F**

Easy Way to the
INTERNET

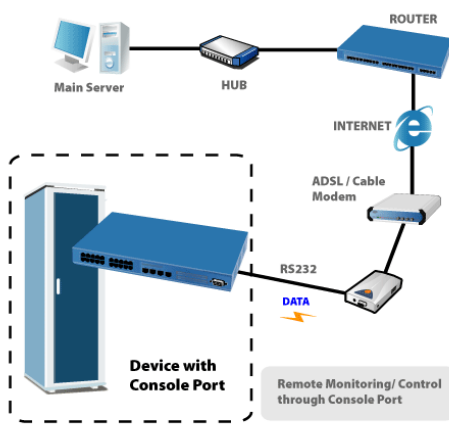
EZL-200F

Application Examples

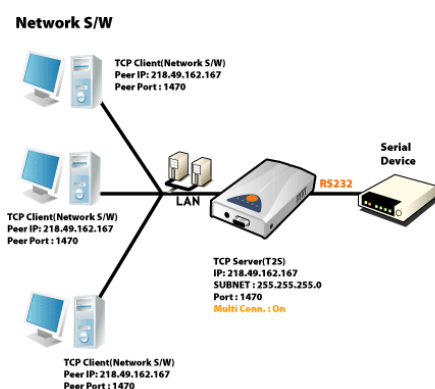
Extending distance between two devices



Remote Console Monitoring



Multi Monitoring



- Access, Monitor, Manage and Control devices over a network or the internet
- 10/100Base-T Ethernet Interface
- Supports RS232/RS422/RS485 Communication
- Powerful security function : SSL3.0/TLS1.0, SSH2.0, IP filtering, Password
- Supports multi monitoring function (maximum 8 channels)
- Supports DHCP and PPPoE for xDSL connection
- Supports variety of TCP/UDP host connecting modes
- AT commands to control network connection
- Easy configuration utility via network (ezConfig)
- Virtual COM Port Redirector (ezVSP) included
- Supports RFC2217, Telnet COM Port Control Protocol
- Auto sense 10/100M Ethernet Speed and 1:1 or cross-over cable
- Firmware is upgradable through the serial port or network
- Environmentally-friendly RoHS compliant

EZL-200F is a network converter for serial devices.

It adds network connectivity to your devices by processing TCP/IP protocol which is required to send and receive data over the Internet.

EZL-200F also makes it possible to extend the distance of serial communications without any change of your legacy systems or replace direct serial connection.

This is a simple and easy way to bring the advantages of remote control and management to your serial devices.

By using EZL-200F, your devices can be remotely controlled, managed and monitored over the Internet.

Additionally, EZL-200F supports secure data communications and Telnet COM Port Control Protocols and Multi-Monitoring so that you can use it for various applications.



Sollae Systems Co., Ltd.

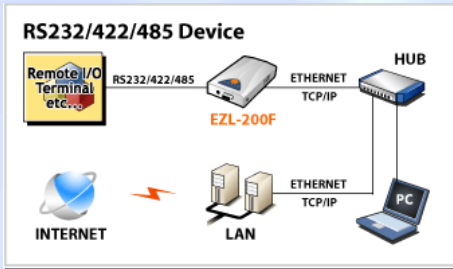
<http://www.sollae.co.kr> Tel +82-32-245-2323 Fax +82-32-245-2327

607 DAELIM BLDG. 592-5 DOHWA1-DONG. NAM-GU INCHEON 402-711 KOREA (REPUBLIC OF)

General Information : ezTCP@sollae.co.kr Sales&Distribution : sales@ezTCP.com Technical Support : support@sollae.co.kr

Secure Serial Ethernet Converter **EZL-200F**

System Diagram



Specifications

*Serial Physical Interface

Serial Interface :

RS232 - RXD, TXD, RTS, CTS, DTR, DSR, RI, DCD

RS422 - RX+, RX-, TX+, TX-

RS485 - RT+, RT-

Interface Type is selectable by Software

±15KV ESD Protection

Connector : DB9M DTE Connector

*Serial Port Property

Data Rate: 1200 bps ~ 115200 bps

Data Bits: 7, 8 bits

Parity: None, Even, Odd

Stop Bit: 1 or 2

Flow Control: RTS/CTS Hardware, Xon/Xoff Software

* Network Physical Interface

Network Interface :

RJ45 (10Base-T/100Base-TX Ethernet)

Ethernet Speed Auto Sense

1:1 or Cross-over Cable Auto Sense

1000 VAC Isolation

* Software Functions

Protocols :

TCP, UDP, IP, ICMP, ARP, Ethernet, TELNET

TFTP, DHCP, PPPoE, SLIP, SSL3.0/TLS1.0, SSH

Security :

Secure Communication Function (SSL)

Secure Login (SSH)

IP filtering - Restrict host

Password for Configuring

Communication Mode :

TCP server (T2S)

TCP client (COD)

TCP server/client with AT command (ATC)

UDP mode (U2S)

Additional Functions :

Multi Monitoring - maximum 8 hosts (T2S Mode)

Telnet COM Port Control Option (RFC2217

Compliant)

Simple Gateway Function (Connecting two

Ethernet networks)

Operating System: MIC RTOS

* Indicators(LEDs)

Power: Red

Status: Yellow, The current status

Ethernet Link: Red - 10M Ethernet,

Green - 100M Ethernet

Ethernet RXD: Yellow

Ethernet TXD: Green

* Processors

CPU: ARM7 Core

ROM: 256K bytes Flash Memory

RAM: 2M bytes SDRAM

* Management

ezConfig: Configuration and Monitoring Tool through Ethernet

Telnet: Telnet Login

SSH: SSH Login

AT Command: Configuring in ATC mode

* Supplementary Software

ezConfig: Configuration Tool for Windows

ezConfig Library: The Library of ezConfig for VC++, VB, Java, and Linux

ezVSP: Serial to Network Virtual Driver for Windows

ezTerm: Simple TCP/IP Communication Test Tool

hotflash - Firmware Upgrade Utility for Windows

* Dimension

Size: 136mm x 83mm x 29mm

Body Netweight: about 140g

* Operating Environment

Input Voltage: DC 5±0.5V

Power Consumption: 320mA typical

Operating Temperature: 0 °C ~ 55°C

* Approvals

CE: F690501/SP-EMC000415

FCC: F690501/LF-EMC000949

MIC: E-E013-05-1418(A)

* Emissions

EN55022:1998/A1:2000/A2:2003 (Class A)

EN61000-3-2:2000

EN61000-3-3:1995/A1:2001

EN55024:1998/A1:2001/A2:2003

FCC Part15, Subpart B, Class A

* Immunity

EN61000-4-2:1995/A1:1998/A2:2000

EN61000-4-3:1996/A1:1998

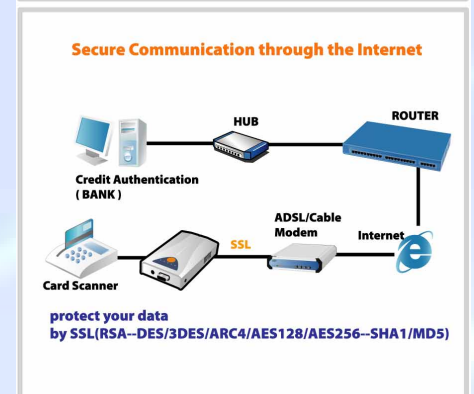
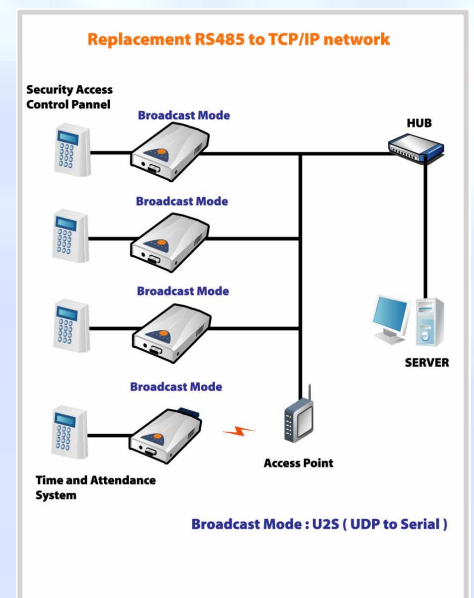
EN61000-4-4:1995/A1:2000/A2:2001

EN61000-4-5:1995/A1:2001

EN61000-4-6:1996/A1:2001

EN61000-4-11:1994/A1:2001

Application Examples



Sollae Systems Co., Ltd.

http://www.sollae.co.kr Tel +82-32-245-2323 Fax +82-32-245-2327

607 DAELIM BLDG. 592-5 DOHWA1-DONG. NAM-GU INCHEON 402-711 KOREA (REPUBLIC OF)

General Information : ezTCP@sollae.co.kr Sales&Distribution : sales@ezTCP.com Technical Support : support@sollae.co.kr