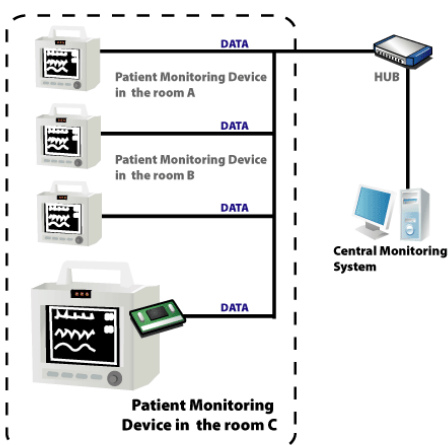


Easy Way to the  
**INTERNET**

## EZL-50L

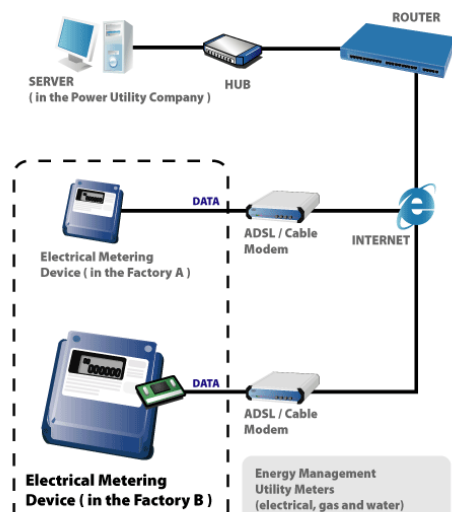
### Application Examples

#### Central Remote Patient Monitoring System

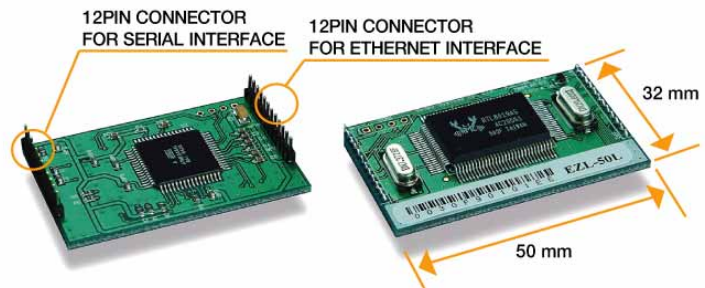


Embedded ethernet modules help you monitor Patients' Vital Signs in the monitoring room

#### Power Management System



Energy Management Utility Meters (electrical, gas and water)



- Access, Monitor, Manage and Control devices over a network or the internet
- 10Base-T Ethernet Interface
- 5V TTL UART Interface
- Very compact size to be embedded easily
- Supports DHCP and PPPoE for XDSL connection
- Supports variety of TCP/UDP host connecting modes
- AT commands to control network connection
- Easy configuration utility Via network (ezConfig)
- Virtual COM Port Redirector (ezVSP) included
- Firmware is upgradable through network
- Environmentally-friendly RoHS compliant

EZL-50L is a module for manufacturers who want to embed Ethernet connectivity in their products easily and economically.

The compact EZL-50L module adds network connectivity to your devices with a serial interface on its host microcontroller.

It reduces cost and risk and shortens development time to add networking capability as a standard feature.

It adds network connectivity to your devices by processing TCP/IP protocol which is required to send and receive data over the Internet.

EZL-50L also makes it possible to extend the distance of serial communications without any change of your legacy systems or replace direct serial connection.

So your devices can be remotely controlled, managed and monitored over the Internet..

Because of its low cost, it is ideal for high-volume products which need low-cost.



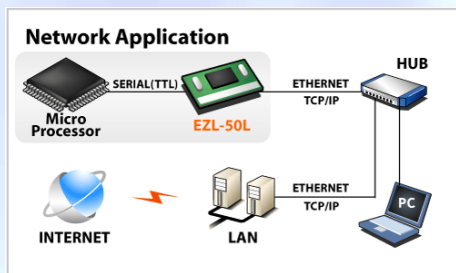
**Sollae Systems Co., Ltd.**

http://www.sollae.co.kr Tel +82-32-245-2323 Fax +82-32-245-2327

607 DAELIM BLDG. 592-5 DOHWA1-DONG. NAM-GU INCHEON 402-711 KOREA (REPUBLIC OF)

General Information : [ezTCP@sollae.co.kr](mailto:ezTCP@sollae.co.kr) Sales&Distribution : [sales@ezTCP.com](mailto:sales@ezTCP.com) Technical Support : [support@sollae.co.kr](mailto:support@sollae.co.kr)

## System Diagram



## Specifications

### \*Serial Physical Interface

#### Serial Interface :

5V TTL UART-RXD, TXD, RTS, CTS

**Connector :** 1x12 2mm pitch male header

### \*Serial Port Property

**Data Rate:** 1200 bps ~ 115200 bps

**Data Bits:** 7, 8 bits

**Parity:** None, Even, Odd

**Stop Bit:** 1 bit

**Flow Control:** RTS/CTS Hardware, Xon/Xoff

Software

### \* Network Physical Interface

#### Network Interface :

1x12 2mm pitch male header (10Base-T)

Additional circuit required

### \* Software Functions

#### Protocols :

TCP, UDP, IP, ICMP, ARP, Ethernet,

TFTP, DHCP, PPPoE

#### Security :

IP filtering - Restrict host

Password for Configuring

#### Communication Mode :

TCP server (T2S)

TCP client (COD)

TCP server/client with AT command (ATC)

UDP mode (U2S)

### \* Indicators(LEDs)

**Status;** Active Low

**Ethernet Link:** Active Low

**Ethernet RXD:** Active High

**Ethernet TXD:** Active High

### \* Processors

**CPU:** Atmel AVR

**ROM:** 64K bytes Flash Memory

**RAM:** 4K bytes SRAM

### \* Management

**ezConfig:** Configuration and Monitoring Tool through Ethernet

**AT Command:** Configuring in ATC mode

### \* Supplementary Software

**ezConfig:** Configuration Tool for Windows

**ezConfig Library:** The Library of ezConfig for VC++, VB, Java, and Linux

**ezVSP:** Serial to Network Virtual Driver for Windows

**ezTerm:** Simple TCP/IP Communication Test Tool

**hotflash:** Firmware Upgrade Utility for Windows

### \* Dimension

**Size:** 50mm x 32mm x 11mm

**Body Netweight:** about 10g

### \* Operating Environment

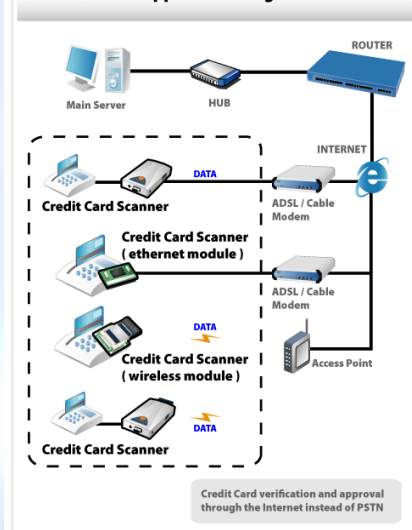
**Input Voltage:** DC 5±0.25V

**Power Consumption:** 78mA typical

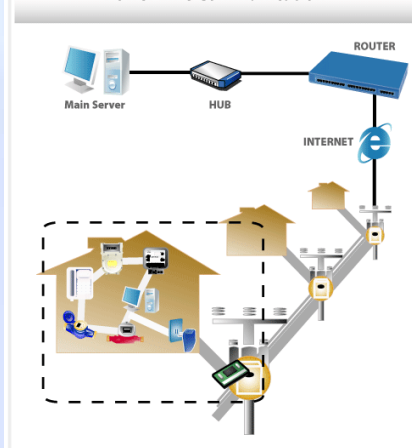
**Operating Temperature:** 0 °C ~ 55°C

## Application Examples

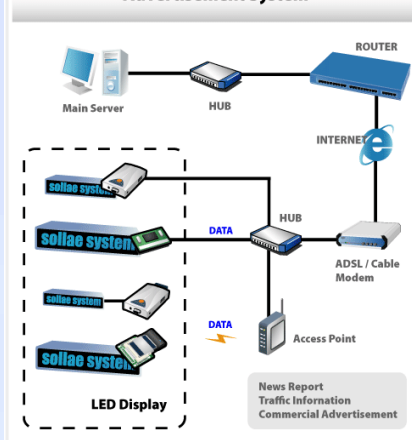
### Credit Card Approval through the Internet



### Power Line Communication



### Advertisement System



**Sollae Systems Co., Ltd.**

http://www.sollae.co.kr Tel +82-32-245-2323 Fax +82-32-245-2327

607 DAELIM BLDG. 592-5 DOHWA1-DONG. NAM-GU INCHEON 402-711 KOREA (REPUBLIC OF)

General Information : [ezTCP@sollae.co.kr](mailto:ezTCP@sollae.co.kr) Sales&Distribution : [sales@ezTCP.com](mailto:sales@ezTCP.com) Technical Support : [support@sollae.co.kr](mailto:support@sollae.co.kr)