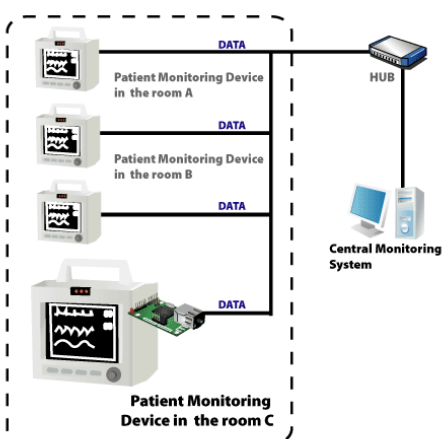


Easy Way to the
INTERNET

EZL-70

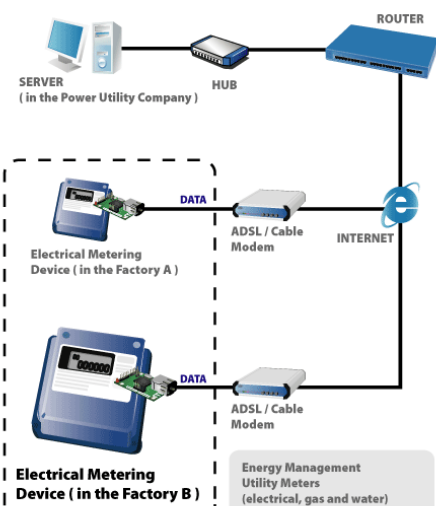
Application Examples

Central Remote Patient Monitoring System

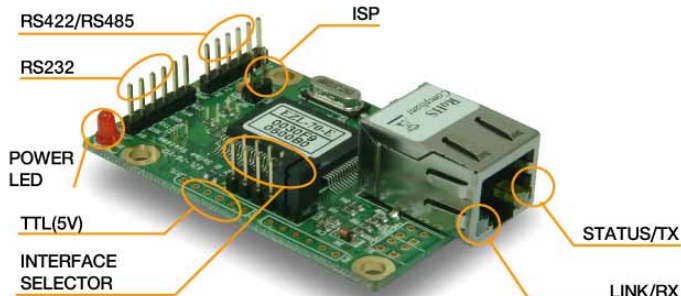


Embedded ethernet modules help you monitor Patients' Vital Signs in the monitoring room

Power Management System



Energy Management Utility Meters (electrical, gas and water)



- Access, Monitor, Manage and Control devices over a network or the internet
- 10Base-T Ethernet Interface
- Supports RS232/RS422/RS485 Communication
- 5V TTL UART Interface
- Very compact size to be embedded easily
- Supports DHCP and PPPoE for xDSL connection
- Supports variety of TCP/UDP host connecting modes
- AT commands to control network connection
- Easy configuration utility via network (ezConfig)
- Virtual COM Port Redirector (ezVSP) included
- Firmware is upgradable through network
- Environmentally-friendly RoHS compliant

EZL-70 is a module with a RJ45 connector for manufacturers who want to embed Ethernet connectivity in their products quickly and easily.

The compact EZL-70 module adds network connectivity to your devices with a serial interface on its host microcontroller.

It reduces cost and risk and shortens development time to add networking capability as a standard feature.

It adds network connectivity to your devices by processing TCP/IP protocol which is required to send and receive data over the Internet.

EZL-70 also makes it possible to extend the distance of serial communications without any change of your legacy systems or replace direct serial connection.

So your devices can be remotely controlled, managed and monitored over the Internet.

Because of its RS232, RS422, and RS485, it is ideal for various applications.



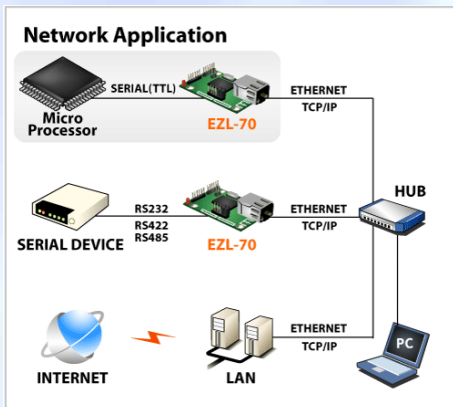
Sollae Systems Co., Ltd.

http://www.sollae.co.kr Tel +82-32-245-2323 Fax +82-32-245-2327

607 DAELIM BLDG. 592-5 DOHWA1-DONG. NAM-GU INCHEON 402-711 KOREA (REPUBLIC OF)

General Information : ezTCP@sollae.co.kr Sales&Distribution : sales@ezTCP.com Technical Support : support@sollae.co.kr

System Diagram



Specifications

*Serial Physical Interface

Serial Interface :

RS232-RXD, TXD, RTS, CTS
 5V-TTL UART - RXD, TXD, RTS, CTS
 RS422 - TX+, TX-, RX+, RX- (full duplex)
 RS485 - TRX+, TRX- (half duplex)

Interface type selection: by a jumper

Connector : 2.54mm pitch header

*Serial Port Property

Data Rate: 1200 bps ~ 115200 bps

Data Bits: 5, 6, 7, 8 bits

Parity: None, Even, Odd

Stop Bit: 1 or 2

Flow Control: RTS/CTS Hardware (RS232, 5V-TTL)

* Network Physical Interface

Ethernet:

RJ45

10Base-T

* Software Functions

Protocols :

TCP, UDP, IP, ICMP, ARP, Ethernet,
 TFTP, DHCP, PPPoE

Security :

IP filtering - Restrict host
 Password for Configuring

Communication Mode :

TCP server (T2S)
 TCP client (COD)

TCP server/client with AT command (ATC)

UDP mode (U2S)

* Indicators(LEDs)

Power: Red

LAN Link/LAN RXD: Green

Status/LAN TXD: Yellow

* Processors

CPU: Atmel AVR

ROM: 64K bytes Flash Memory

RAM: 4K bytes SRAM

* Management

ezConfig: Configuration and Monitoring Tool through Ethernet

AT Command: Configuring in ATC mode

* Supplementary Software

ezConfig: Configuration Tool for Windows

ezConfig Library: The Library of ezConfig for VC++, VB, Java, and Linux

ezVSP: Serial to Network Virtual Driver for Windows

ezTerm: Simple TCP/IP Communication Test Tool

hotflash - Firmware Upgrade Utility for Windows

* Dimension

Size: 60mm x 40mm x 17mm

Body Netweight: about 20g

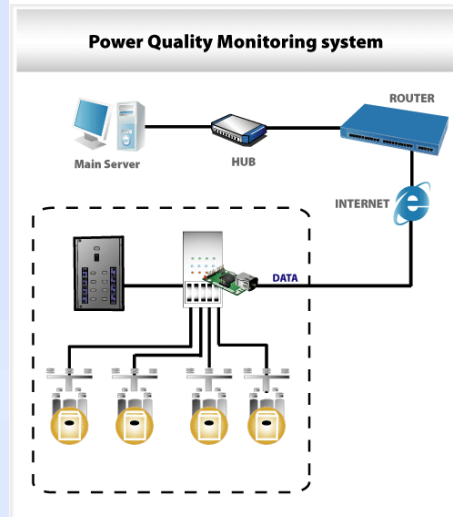
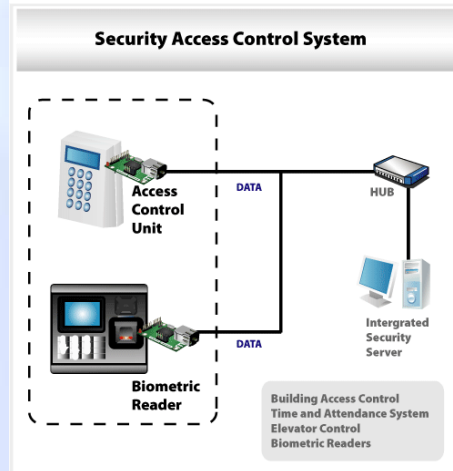
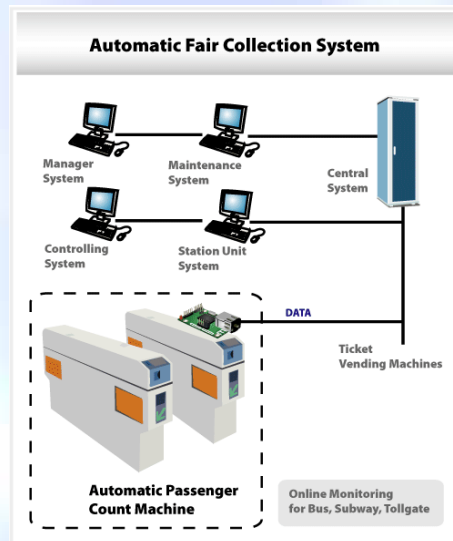
* Operating Environment

Input Voltage: DC 5±0.25V

Power Consumption: 60mA typical

Operating Temperature: 0 °C ~ 55°C

Application Examples



Sollae Systems Co., Ltd.

http://www.sollae.co.kr Tel +82-32-245-2323 Fax +82-32-245-2327

607 DAELIM BLDG. 592-5 DOHWA1-DONG. NAM-GU INCHEON 402-711 KOREA (REPUBLIC OF)

General Information : ezTCP@sollae.co.kr Sales&Distribution : sales@ezTCP.com Technical Support : support@sollae.co.kr